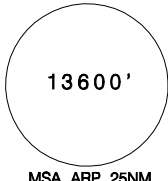
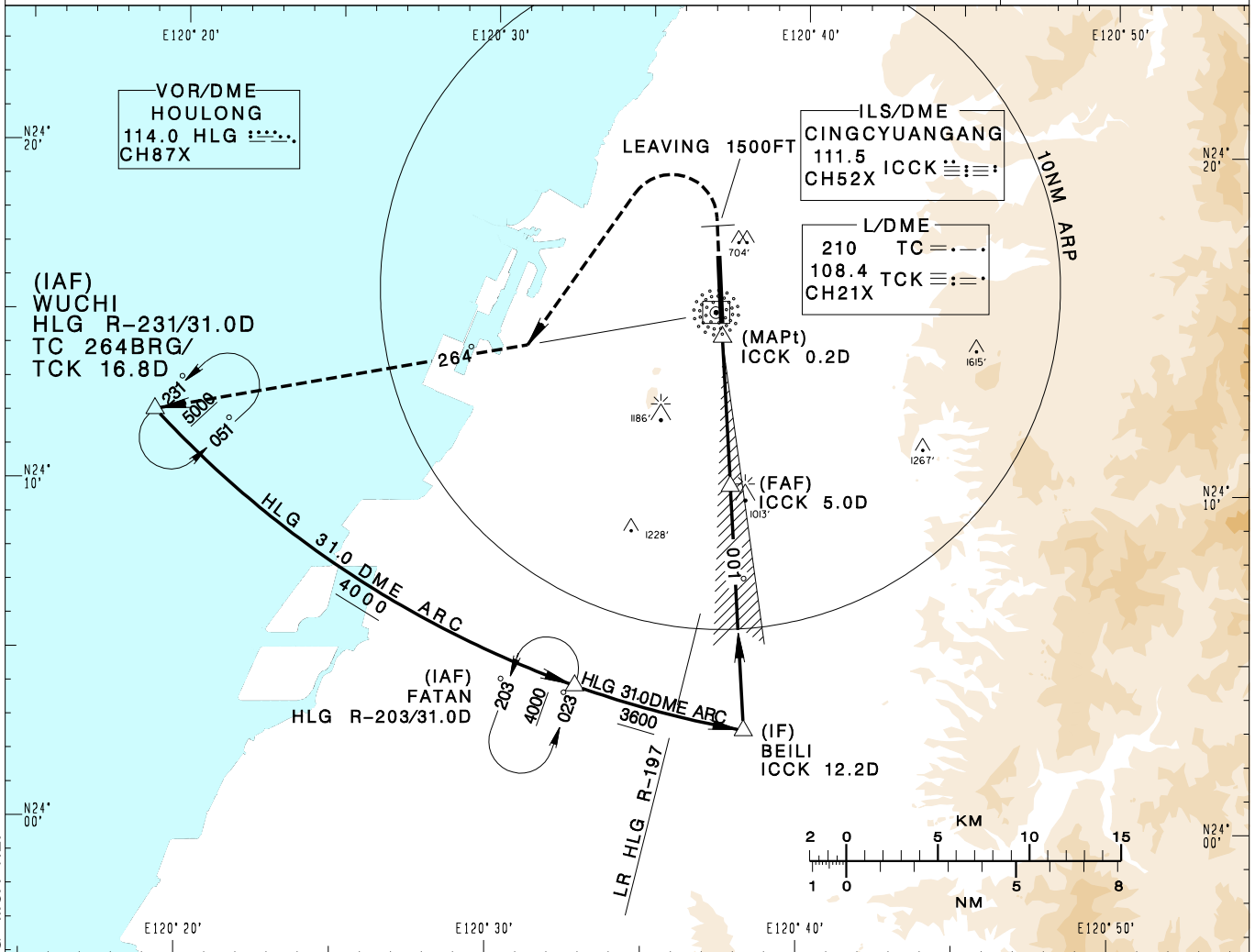


臺中/清泉崗機場
TAICHUNG/CINGCYUANGANG AD

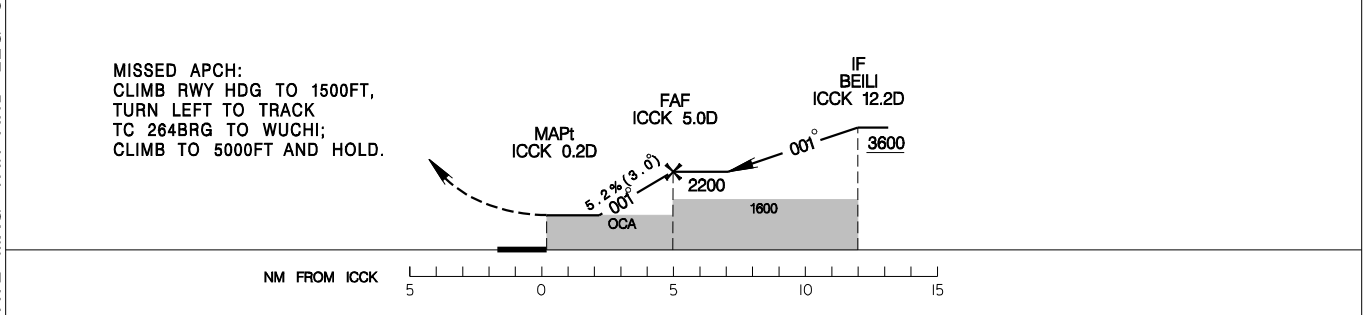
RCMQ
LOC RWY36

| | | | | | |
|--|-------------------------------|----------------------|---|--------------------|--------------------|
| TAIPEI APP 130.1 129.6 | TAICHUNG TWR 118.75 120.25 | ATIS 127.75 |  <p>13600'</p> <p>MSA ARP 25NM</p> | | |
| Apt Elev: 665' | | Rwy36 THR Elev: 663' | | Trans Level: FL130 | Trans Alt: 11,000' |
| BEARINGS ARE MAGNETIC; DISTANCES ARE NAUTICAL MILES; ELEVATIONS, HEIGHTS IN FEET | | | | | |

VAR 5°W-2022



| | | | | |
|--------------|------|------|------|------|
| DIST to ICCK | 2DME | 3DME | 4DME | 5DME |
| ADVISORY ALT | 1290 | 1610 | 1930 | 2200 |



| MINIMA (OCA IN FT, VIS IN M, OCH IN FT) | | | | | NOTE CIRCLING NOT AUTHORIZED EAST OF RWY. *DME REQUIRED. |
|---|------------------------------|---------------|---------------|---------------|---|
| CATEGORY | A | B | C | D | |
| STRAIGHT IN | 1260/RVR ¹²⁰⁰ 595 | 1260/1600 595 | 1260/2000 595 | 1260/2000 595 | |
| STRAIGHT IN (ALS OUT) | 1260/1600 595 | 1260/1600 595 | 1260/2700 595 | 1260/2700 595 | |
| CIRCLING | 1360/1900 695 | 1360/2800 695 | 1600/4400 935 | 1600/4800 935 | |

CHANGES: MAPt DEF; UPDATE MAG VAR AND LEG CRS; CHG MSA REF